



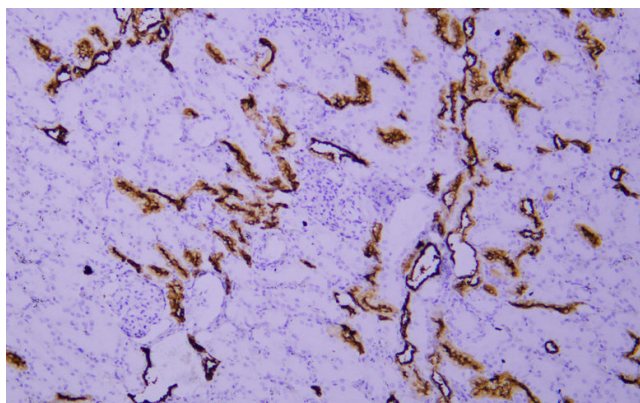
# Epithelial Membrane Antigen(MUC1) rabbit mAb(ABT48R)

<b>Catalog No</b>	YP-Ab-15510
<b>Isotype</b>	IgG
<b>Reactivity</b>	Human
<b>Applications</b>	IHC;IF
<b>Gene Name</b>	MUC1 PUM
<b>Protein Name</b>	Mucin-1 (MUC-1) (Breast carcinoma-associated antigen DF3) (Carcinoma-associated mucin) (Episialin) (H23AG) (Krebs von den Lungen-6) (KL-6) (PEMT) (Peanut-reactive urinary mucin) (PUM) (Polymorphic epi
<b>Immunogen</b>	Synthesized peptide derived from human Epithelial Membrane Antigen(MUC1)
<b>Specificity</b>	This antibody detects endogenous levels of Epithelial Membrane Antigen(MUC1) at Human
<b>Formulation</b>	Liquid in PBS containing 50% glycerol, 0.5% BSA and 0.02% sodium azide.
<b>Source</b>	Polyclonal, Rabbit,IgG
<b>Purification</b>	The antibody was affinity-purified from Cell supernatant by affinity-chromatography using specific immunogen.
<b>Dilution</b>	IHC-p 1:50. IF 1:50-200
<b>Concentration</b>	1 mg/ml
<b>Purity</b>	≥90%
<b>Storage Stability</b>	-20°C/1 year
<b>Synonyms</b>	Mucin-1 (MUC-1;Breast carcinoma-associated antigen DF3;Carcinoma-associated mucin;Episialin;H23AG;Krebs von den Lungen-6;KL-6;PEMT;Peanut-reactive urinary mucin;PUM;Polymorphic epithelial mucin;PEM;Tumor-associated epithelial membrane antigen;EMA;Tumor-associated mucin;CD antigen CD227) [Cleaved into: Mucin-1 subunit alpha (MUC1-NT;MUC1-alpha); Mucin-1 subunit beta (MUC1-beta;MUC1-CT)]
<b>Observed Band</b>	
<b>Cell Pathway</b>	Apical cell membrane ; Single-pass type I membrane protein . Exclusively located in the apical domain of the plasma membrane of highly polarized epithelial cells. After endocytosis, internalized and recycled to the cell membrane. Located to microvilli and to the tips of long filopodial protusions.; [Isoform 5]: Secreted.; [Isoform Y]: Secreted.; [Isoform 9]: Secreted.; [Mucin-1 subunit beta]: Cell membrane. Cytoplasm. Nucleus. On EGF and PDGFRB stimulation, transported to the nucleus through interaction with CTNNB1, a process which is stimulated by phosphorylation. On HRG stimulation, colocalizes with JUP/gamma-catenin at the nucleus.

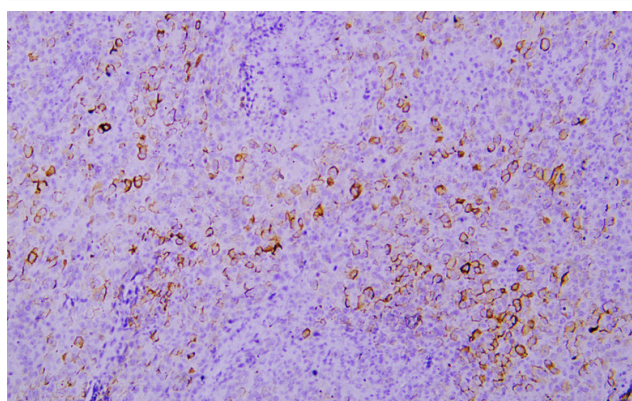


<b>Tissue Specificity</b>	Expressed on the apical surface of epithelial cells, especially of airway passages, breast and uterus. Also expressed in activated and unactivated T-cells. Overexpressed in epithelial tumors, such as breast or ovarian cancer and also in non-epithelial tumor cells. Isoform Y is expressed in tumor cells only.
<b>Function</b>	alternative products: Additional isoforms seem to exist, caution: O-glycosylation sites are annotated in first sequence repeat only. Residues at similar position are probably glycosylated in all repeats. Experimental sites were determined in a synthetic peptide glycosylated in vitro (PubMed:7744025, PubMed:9597769)., caution: The N-terminal sequence has been shown (PubMed:11341784) to begin at position 24 or 28., developmental stage: During fetal development, expressed at low levels in the colonic epithelium from 13 weeks of gestation., function: The alpha subunit has cell adhesive properties. Can act both as an adhesion and an anti-adhesion protein. May provide a protective layer on epithelial cells against bacterial and enzyme attack., function: The beta subunit contains a C-terminal domain which is involved in cell signaling, through phosphorylations and protein-protein interactions. Modulates s
<b>Background</b>	
<b>matters needing attention</b>	Avoid repeated freezing and thawing!
<b>Usage suggestions</b>	This product can be used in immunological reaction related experiments. For more information, please consult technical personnel.

## Products Images



Immunohistochemical analysis of paraffin-embedded human Kidney. 1, Antibody was incubated at 4° overnight. 2, TRIS-EDTA of pH8.0 was used for antigen retrieval. 3, Secondary antibody was diluted at 1:200 (room temperature, 30min).



Immunohistochemical analysis of paraffin-embedded human Mesothelioma. 1, Antibody was incubated at 4° overnight. 2, TRIS-EDTA of pH8.0 was used for antigen retrieval. 3, Secondary antibody was diluted at 1:200 (room temperature, 30min).